

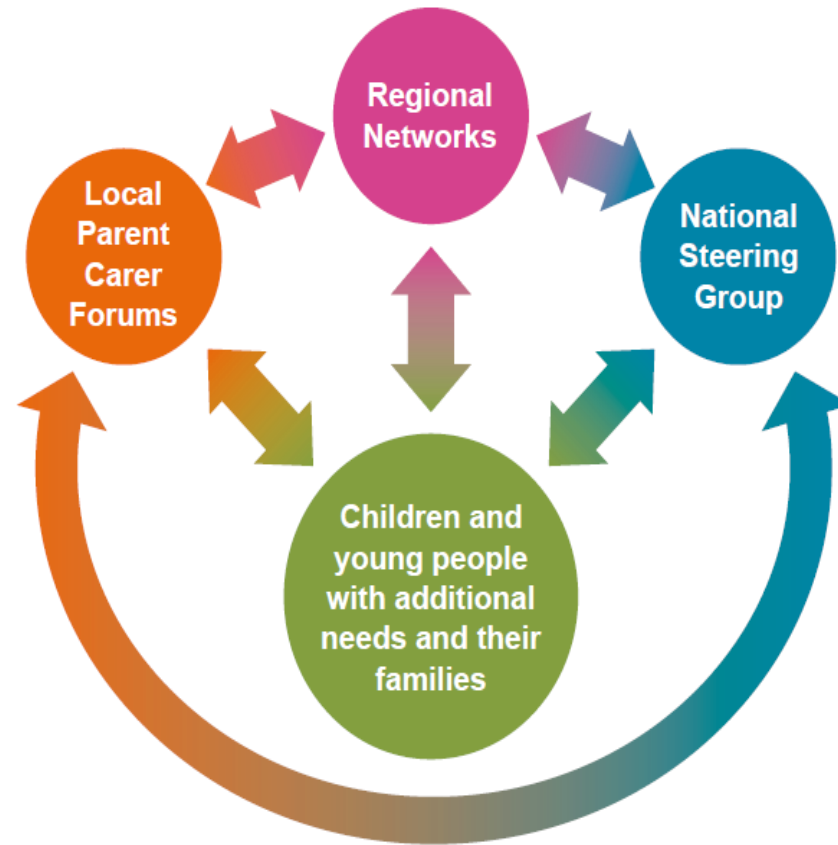
Working with Families

Sherann Hillman MBE

**Head of Family Services Seashell Trust, NNPCF National
Rep, NW Regional PCF Steering Group Member & Co-Chair
Stockport Parent Carer Forum**



Introducing Parent Carer Forums and parent participation



What are parents most concerned about currently?

Ceasing the plan so young people do not get the chance to go to college

Funding

Placement & of their choice

Tribunals & costs

Support for young person and family

Transitions - in and out

Communications

Involved in decision making

SEN Support & EHC Plans - quality, reviews & ceasing

Health and Wellbeing - Services

What's next after college?

What are parents looking for from post-16/19 provision?

- ▶ Environment, not too far away home
- ▶ Seamless journey through the educational placement - the lived experience
- ▶ Target setting to be well communicated and devised with families. The best targets come from families!
- ▶ Talk to them regularly to involve them in setting clear outcomes and review progress towards them, discuss activities and support that will help achieve them, and identify the responsibilities of the parent.
- ▶ Meeting with parents at least 3 times each year
- ▶ Ensure parents can see the progress their child is making. Bring their learning to life through how you record it.

How can we work better with parents?

- ▶ Commitment, openness, transparency & trust
- ▶ Be honest, communicating openly, offering clear explanations & managing expectations effectively
- ▶ No jargon
- ▶ Build good relationships
- ▶ Co-production - valuing and recognising the contribution of everyone. Young people do have their own rights post-16, however parents and all those working with them also bring valuable contributions
- ▶ We all have a collective responsibility to ensure they receive the right support and education



Find out more!

Contact me on
sherann.Hillman@seashelltrust.org.uk

Direct line 0161 610 0114
www.seashelltrust.org.uk

Twitter: Sherann_hillman

NNPCF
www.nnpcf.org.uk

Contact
www.contact.org.uk

The Social Care Institute for Excellence
www.scie.org.uk

Thinking Local Acting Personal
www.thinklocalactpersonal.org.uk

