

Natspec conference 2019

High needs, high aspirations

2 and 3 April 2019

Value for Money

Davina Jones



National Star

Realising the aspirations
of people with disabilities



National Star

Vision

Is for a world in which people with disabilities are able to realise their potential as equal and active citizens in control of their lives

Mission

To realise the aspirations of people with disabilities through personalised learning, transition, support and destination services

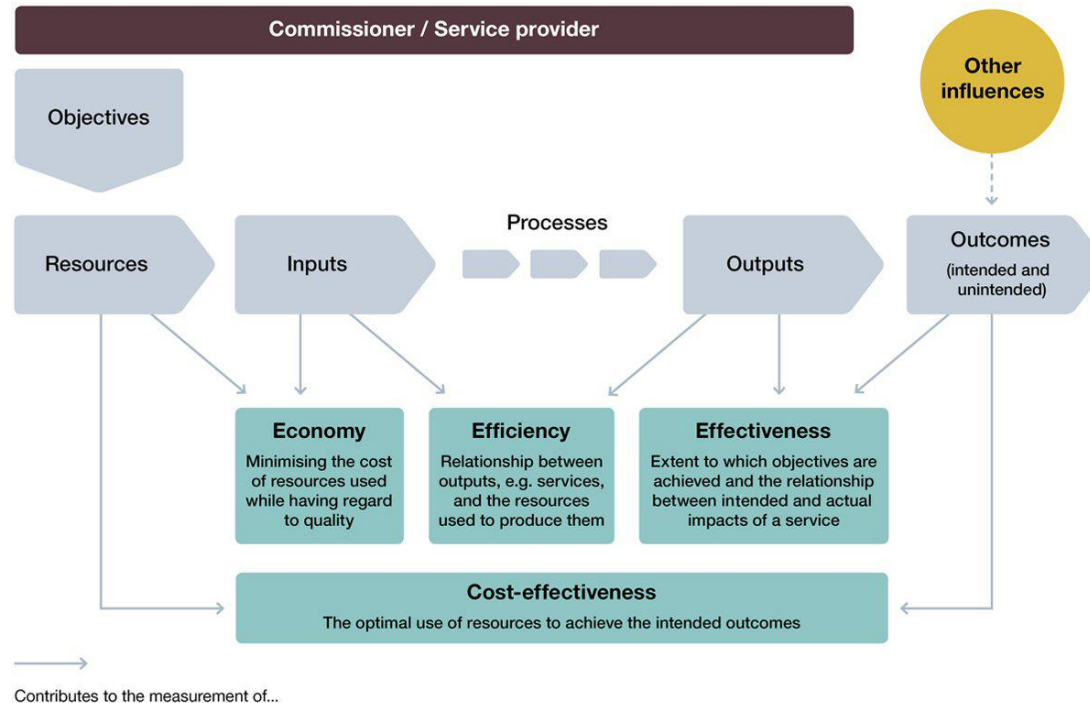
Values

Equality
Diversity
Self determination
Individuality

Ensuring we work with:

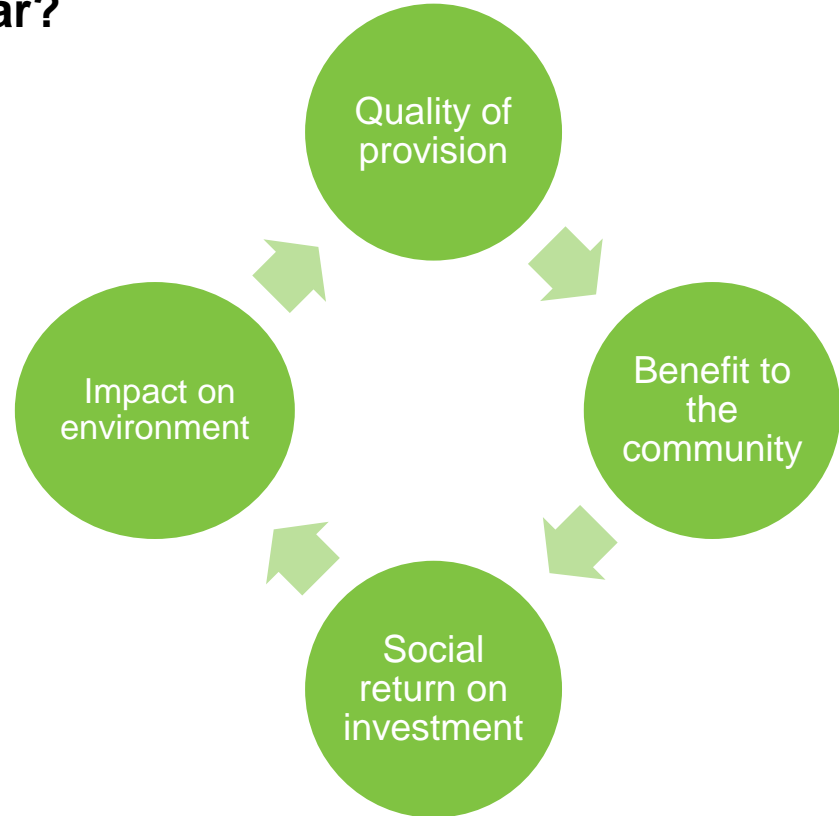
Respect
Integrity
Perseverance
Continuous improvement

Value for Money – are you thinking what I am thinking?



What does that mean for National Star?

What does National Star need to consider when making a judgement as to whether our services represent value for money?

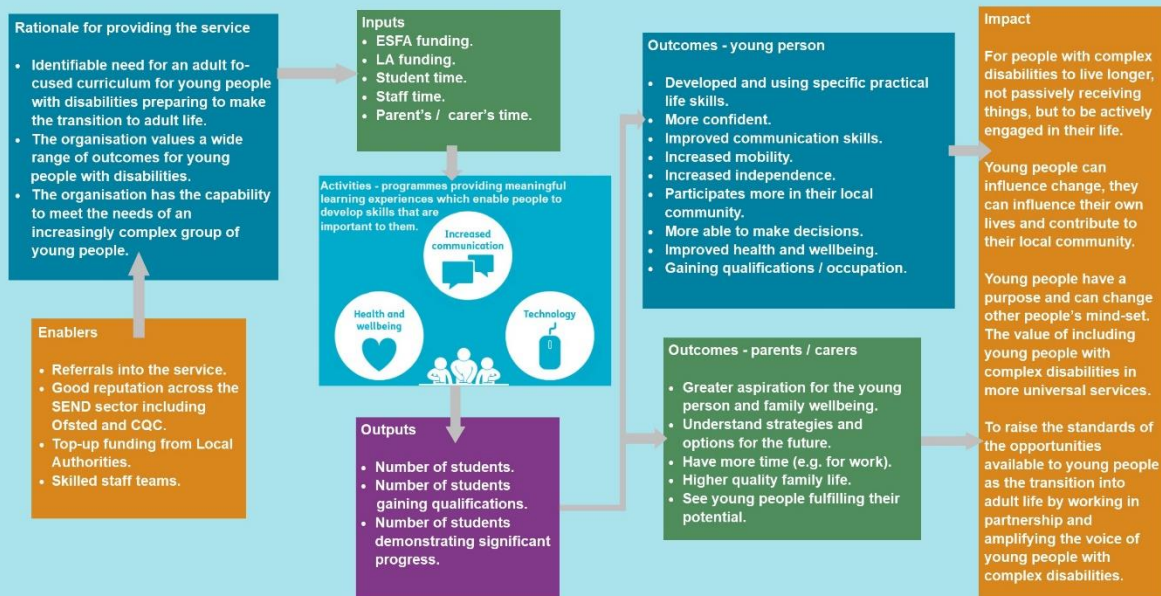


Create a social value framework which enables your organisation to:

Area	Activity
Quality of provision	Self assessment Map stakeholders and engage with them
Benefits to the community	Measure the value of partnerships Engage with wider stakeholder group
Social return on investment	Measure theory of change (SROI) Independent verification of your claims
Impact on the environment	Procurement policies and contracts Staff / student engagement

National Star - Theory of Change

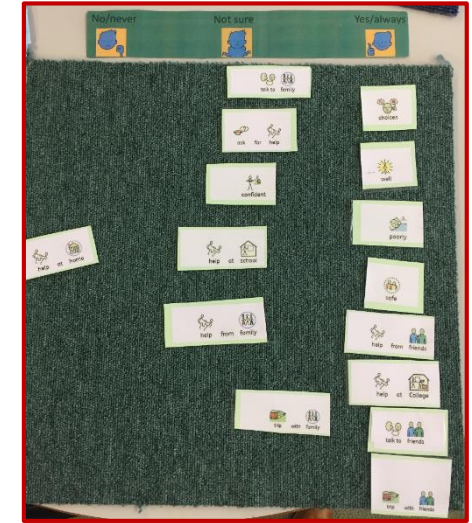
Residential learning programmes for young people with complex disabilities



Stakeholder mapping

Stakeholder group	Power	Influence	Legitimacy	What you think they value	What you know they value
Young people Parents/carer Funders Community Partners Other providers.	The stakeholders that have the ability to close you down or stop what you do.	The stakeholders that influence how you approach and deliver services.	The stakeholders that hold you to account for the services that you deliver.	What have stakeholders said?	How have stakeholders acted?

- Existing data can be used but needs to be supplemented by direct engagement with the stakeholder groups.
- Different methods were used to get vital feedback from students with complex disabilities.
- Some students used talking mats to go through a series of questions to look at talking to people and getting help at home, at school and then at college.
- Other themes like confidence, choice, well, poorly and safe were also discussed.



Now able to make choices, tell people when he was well / poorly, feels safe, gets help from college and friends, can talk to friends and can go on trips with friends.

Valuing outcomes – complex learners

Outcome	Proxy	Proxy value	Multiplier for complex needs
Students			
People have improved mobility	Cost of private physiotherapy session - 2 x hours weekly	£7,667	£12,267
People are happier / enabled to achieve their aspirations	Valuing mental health	£44,237	£70,779
People are more confident	HACT Wellbeing Valuation: High confidence	£13,080	£20,928
People have improved communication skills	The annual cost of weekly SLT support. www.speechandlanguage-therapy.com	£4,000	£6,400
People are more able to make decisions	HACT Wellbeing Valuation: Feel in control of life	£15,894	£25,430
People participate more in their local community	HACT Wellbeing Valuation: Member of social group	£1,850	£2,960
People have improved relationships	HACT Wellbeing Valuation: Can rely on family	£1,850	£2,960
People gain qualifications	Average cost per student of educational element of funding	£20,123	£20,123
People enter self-employment	HACT Wellbeing Valuation: Self-employment	£11,588	£18,541

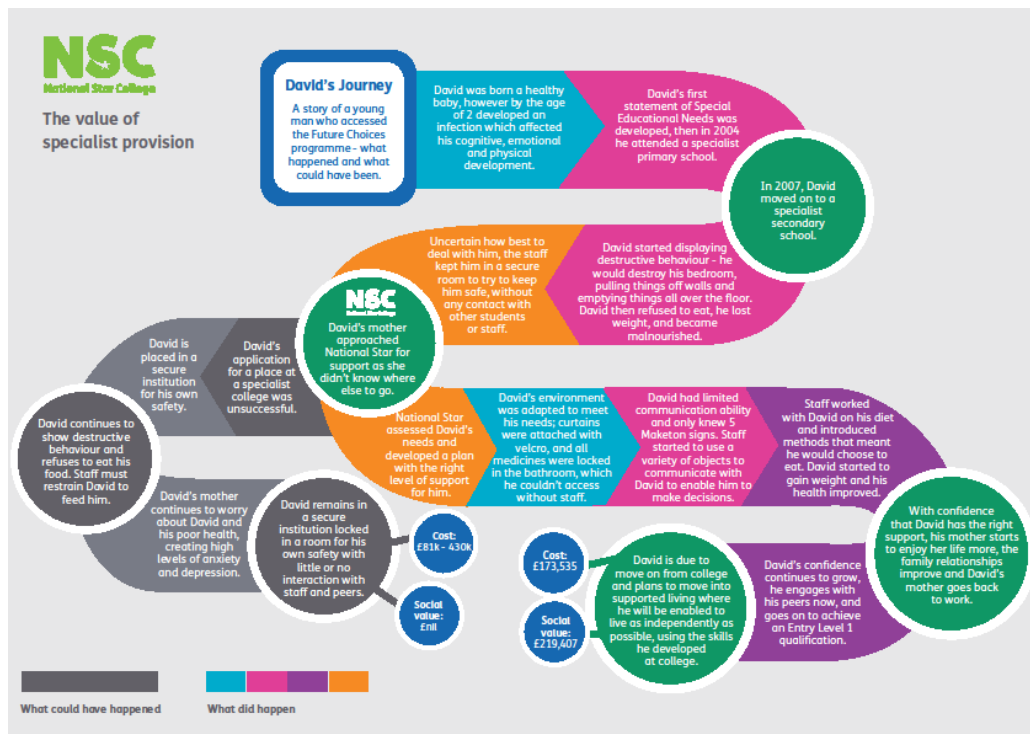
Valuing outcomes – complex learners

Outcomes	Proxy	Proxy value	Multiplier for complex needs
Parents and carers			
People have an improved quality of life	Valuing mental health	£44,237	N/A
People have improved relationships	HACT Wellbeing Valuation: Can rely on family	£1,850	N/A
People enter employment	HACT Wellbeing Valuation: Full-time employment	£14,433	N/A
External stakeholders			
The reputation of the sector is enhanced	The cost of 12 months PR support	£12,442	N/A
A reduction in unnecessary access to health services	Hospital inpatients - average cost per episode (elective and non-elective admissions)	£1,779	N/A

Valuing outcomes – supported interns

Outcomes	Proxy	Proxy value
People have increased opportunities	HACT Wellbeing Valuation – feel in control of life	£12,454
People have more self-understanding	Emotional intelligence course – 2-day course with 3 1:1 coaching sessions	£1,324
People are fulfilled	Valuing mental health	£44,237
People have more money	Actual annual in income	£17,920
People have better relationships	HACT Wellbeing Valuations – improved relationships with family	£6,700
People enter part-time employment	HACT Wellbeing Valuations – access part-time employment	£1,176
People gain qualifications / increased skills	HACT Wellbeing Valuations – vocational training	£1,019

Sharing findings:



How do we know National Star services represent value for money?

Area	Activity	Evidence
Quality of provision	Self assessment Map stakeholders and engage with them	Outstanding self assessment, Ofsted and CQC Positive feedback all groups
Benefits to the community	Measure the value of partnerships Engage with wider stakeholder group	Launch of Festable Positive feedback from local and national partners
Social return on investment	Measure theory of change (SROI) Independent verification of your claims	SROI £1 = £1.38 for residential programmes for complex learners
Impact on the environment	Procurement policies and contracts Staff / student engagement	Updated procurement policy Changes to behaviours



National Star

Realising the aspirations
of people with disabilities

National Star is a working name of National Star Foundation which is registered in England and Wales, company number 522846, charity number 220239.
Registered office Ullenwood Manor, Ullenwood, Cheltenham, Gloucestershire, GL53 9QU